

# Early Childhood Update



**Global Leaders for  
Young Children  
Budapest, October 2008**



# Consultative Group on Early Care and Development

---

- **Cornerstones**

  - Start early

  - Get ready for success

  - Improve primary school quality

  - Integrate early childhood into policies

- **Coordinators Notebooks- advocacy and financing**

- **Position paper on ECD and Emergencies**



# New Reports

---

- World Health Organization  
Social Determinants of Health  
Early Childhood a Powerful Equalizer
- Global Monitoring Report 2008
- Convention on the Rights of Persons with Disabilities



# Indicators

---

- Convention on the Rights of the Child  
Policy and child indicators based to assess CRC plans regarding young children
- Child development indicators  
UNICEF  
World Bank- EDI
- Cumulative risk index  
Poverty, health and nutrition status, maternal education, etc



## Other new initiatives

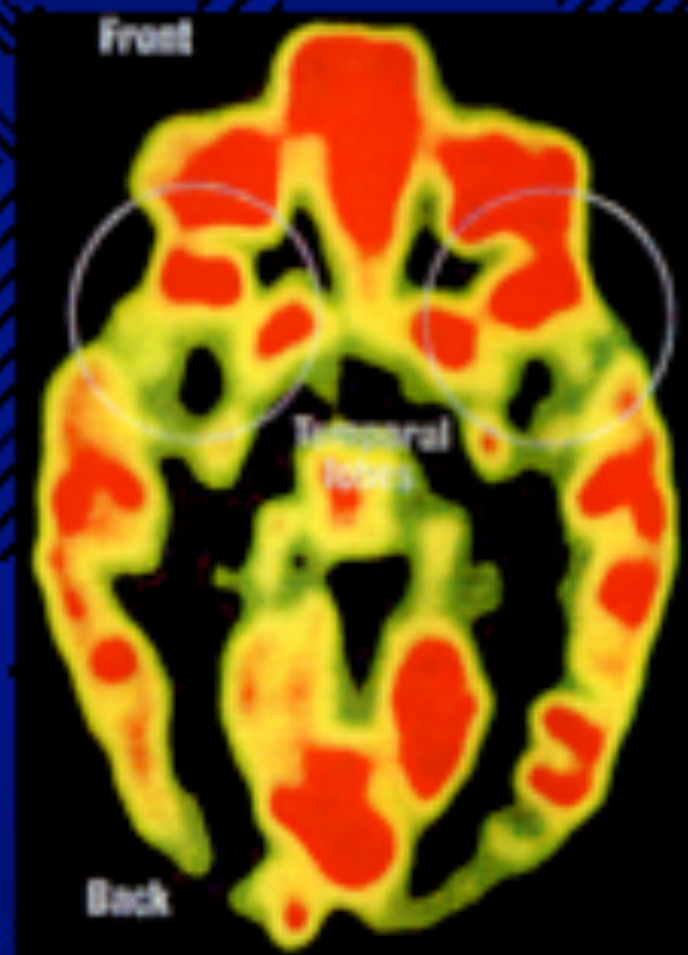
---

- Scaling Up- Wolfensohn Center
- Reaching the business community,  
Committee for Economic Development
- Reaching reporters- International Center  
on Journalists

# Sample Items in a “toolkit” to Promote Early Childhood Development

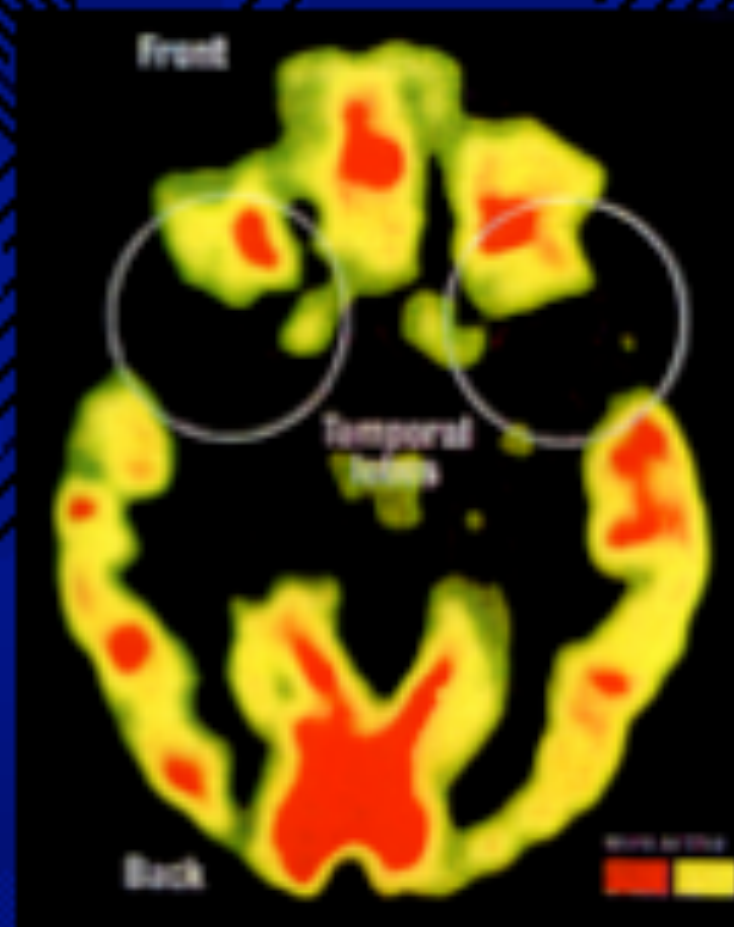
J. Lombardi

# Normal Brain Development



Source: Movement Special Edition, 1997

# At-Risk Brain Development



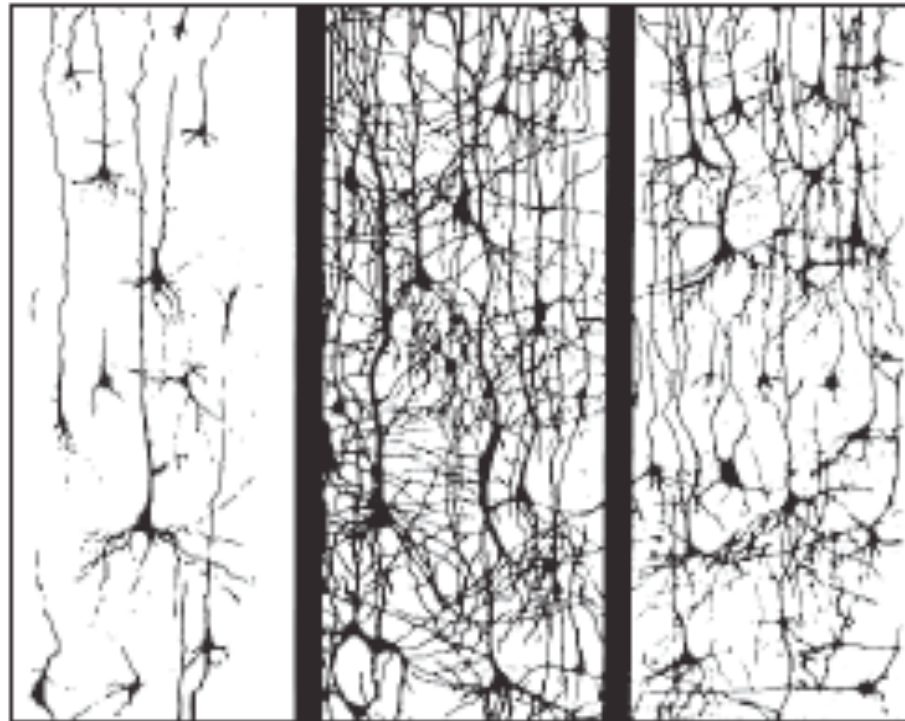
Source: *Neurovent Spatial Edition, 1997*

# Synaptic Development Depends on Experience

At Birth

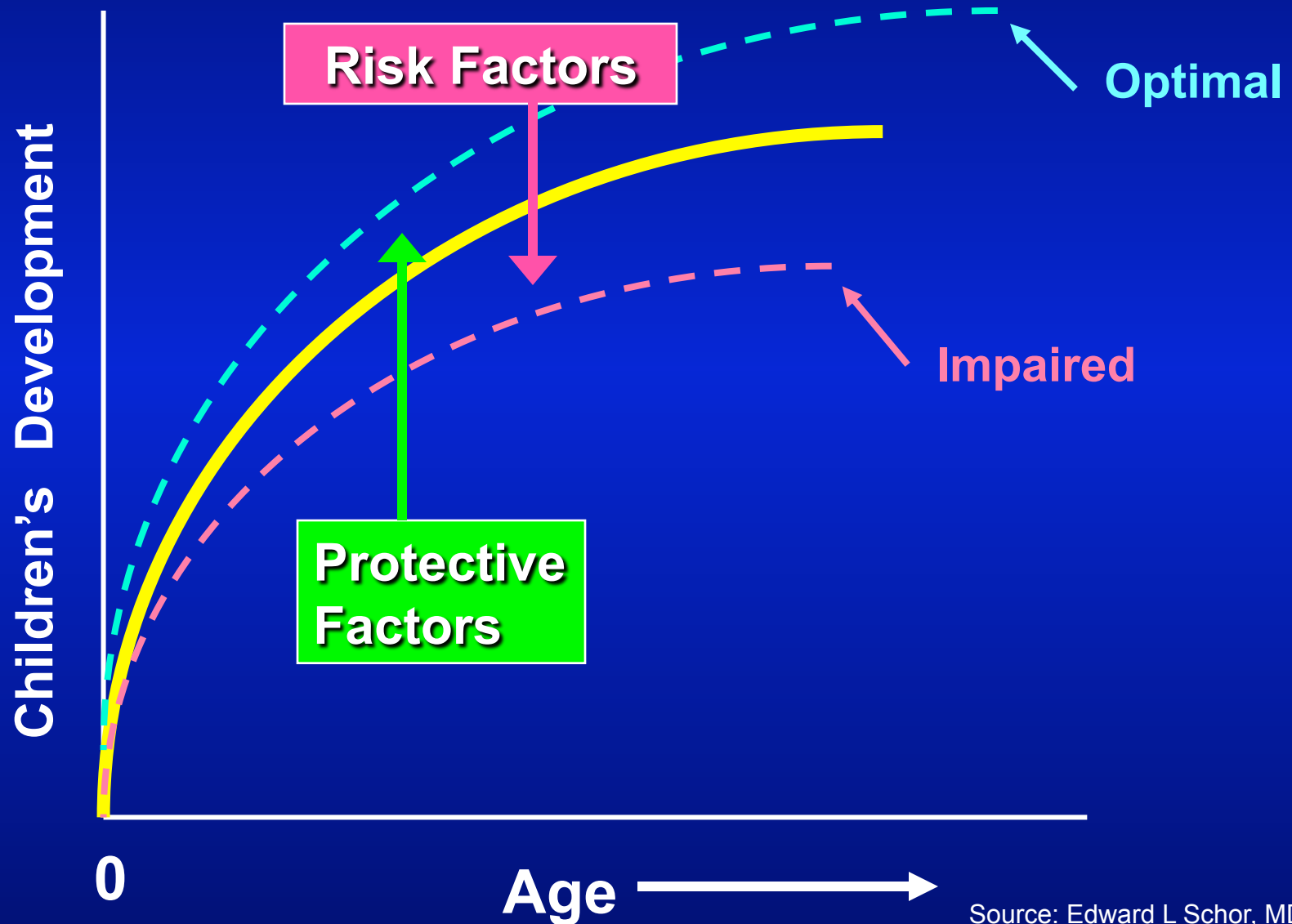
Age 6

Age 14



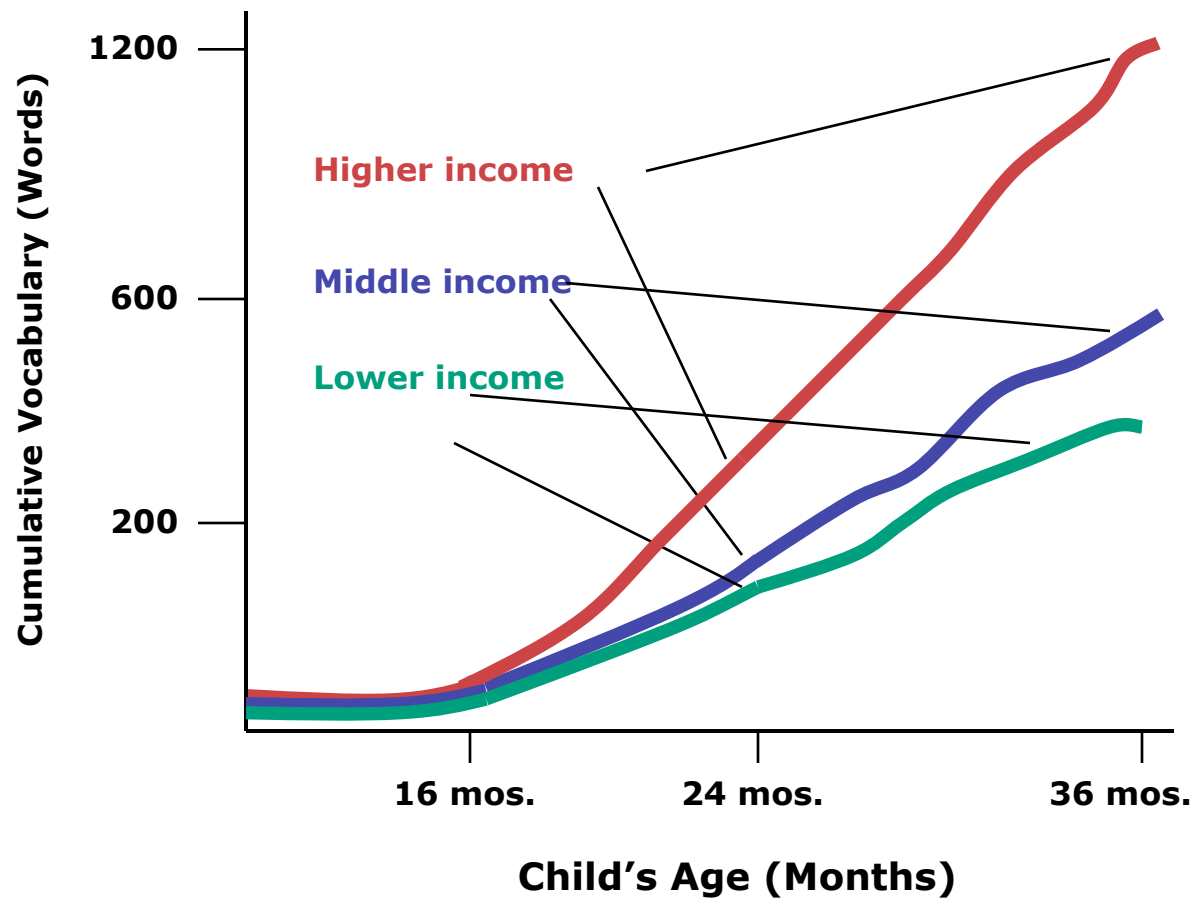
*Source of Graphic:  
Harry T. Chugani; Children's Hospital of  
Michigan*

# A Child's Developmental Trajectory Can Be Modified With Appropriate Interventions



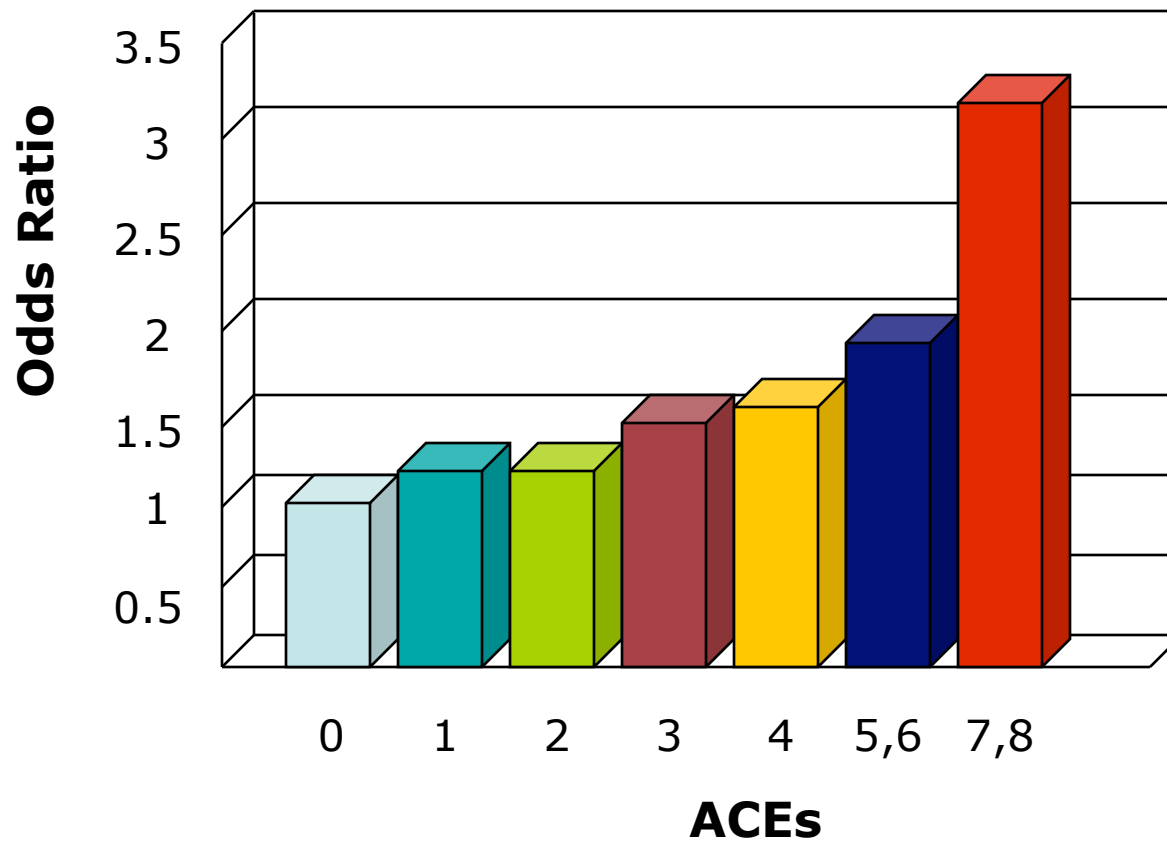
Source: Edward L Schor, MD  
The Commonwealth Fund

# Disparities in Early Vocabulary Growth



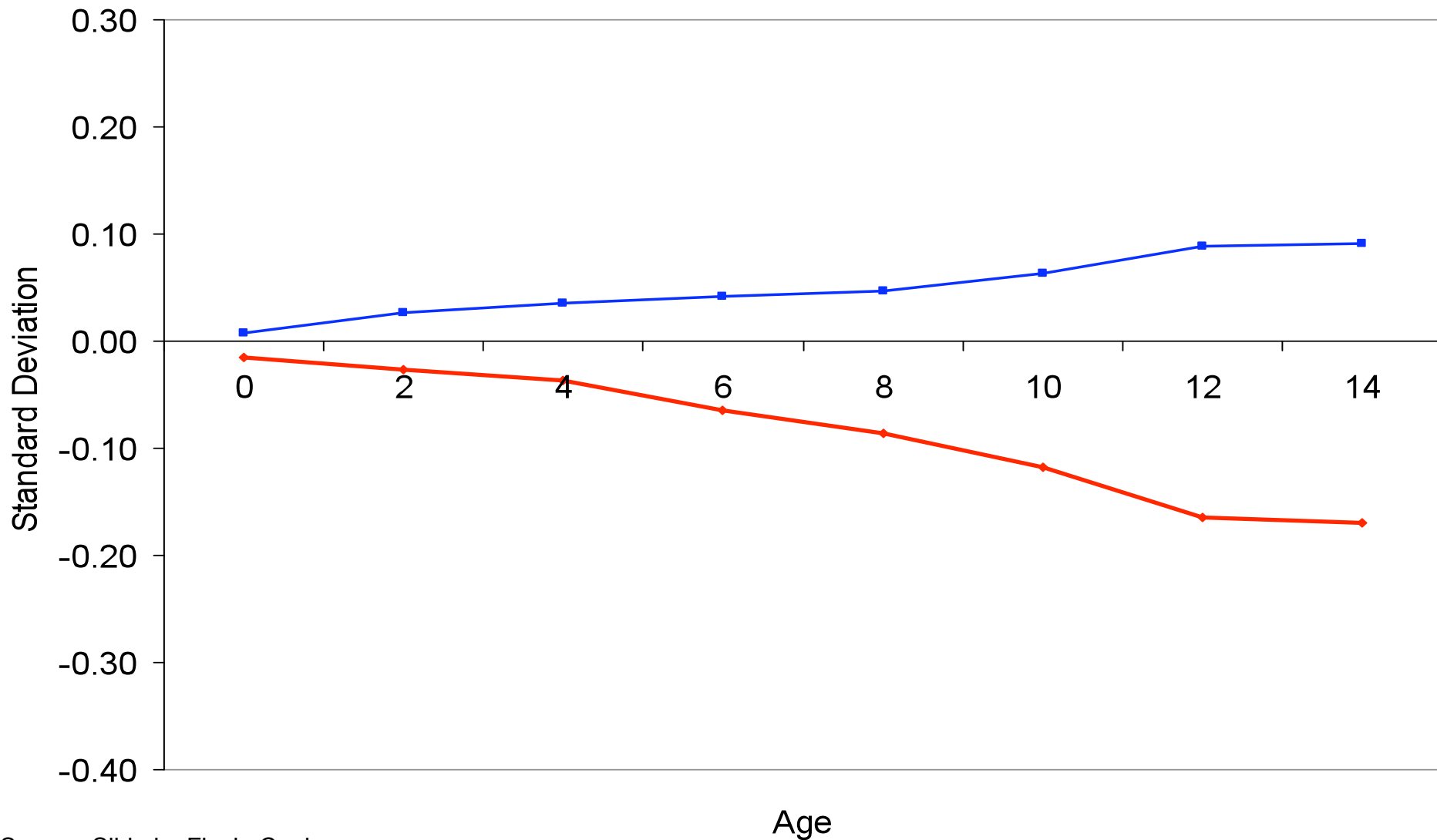
Source: Hart & Risley (1995)

# Adverse Childhood Experiences and Adult Cardiovascular Disease



Source: Dong et al, 2004

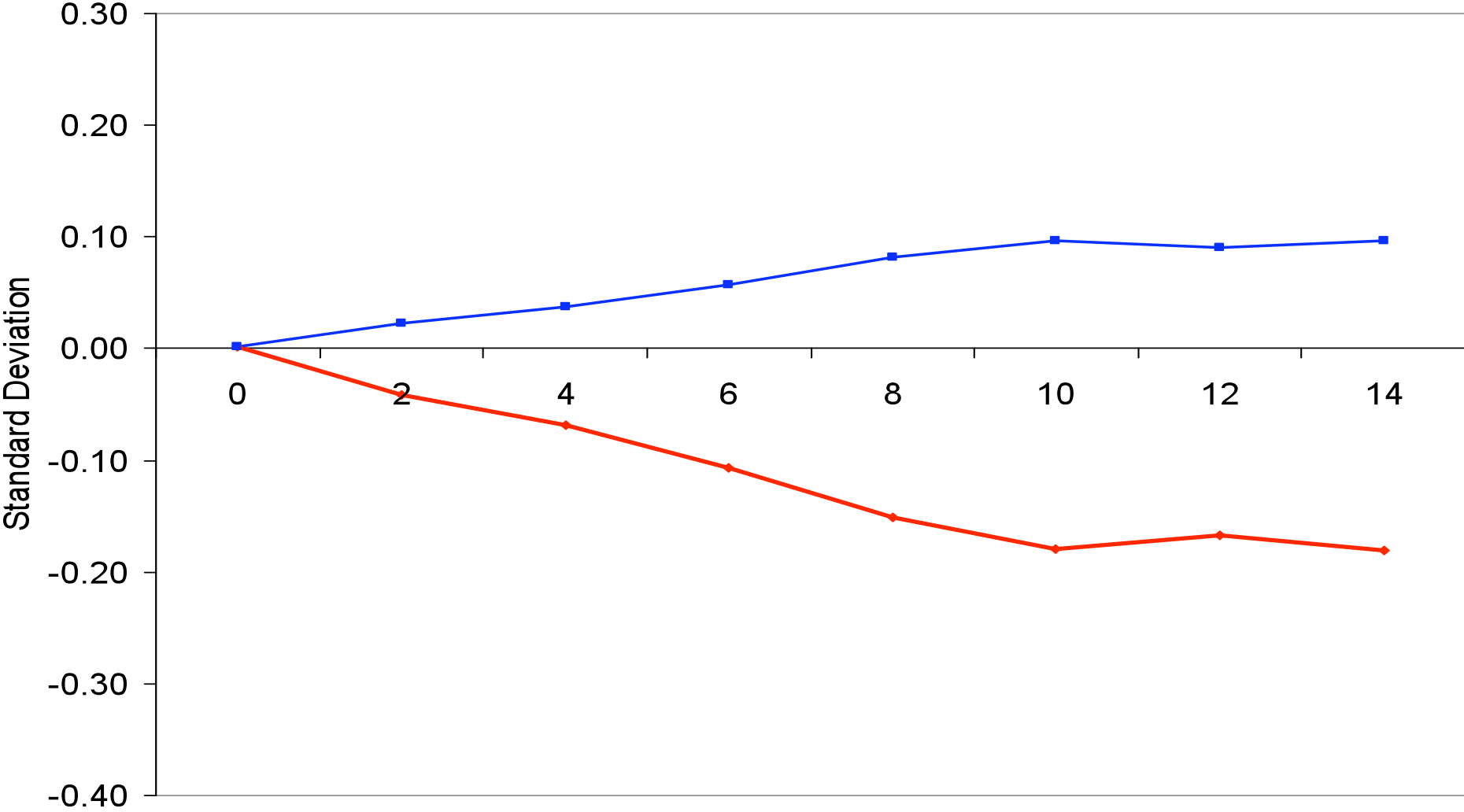
Figure  
Dynamics of Cognitive Skill Accumulation  
Children Born in Families Below and Above the Poverty Line



Source: Slide by Flavio Cunha

Below Poverty Line Above Poverty Line

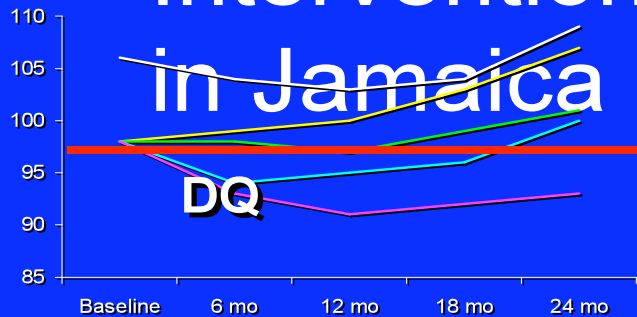
Figure  
Dynamics of Non-Cognitive Skill Accumulation  
Children Born in Families Below vs Above the Poverty Line



Source: Slide by Flavio Cunha

Age  
◆ Below Poverty Line    ■ Above Poverty Line

# Interventions with stunted children in Jamaica



**non-stunted**

**both Rx**

**stimulated**

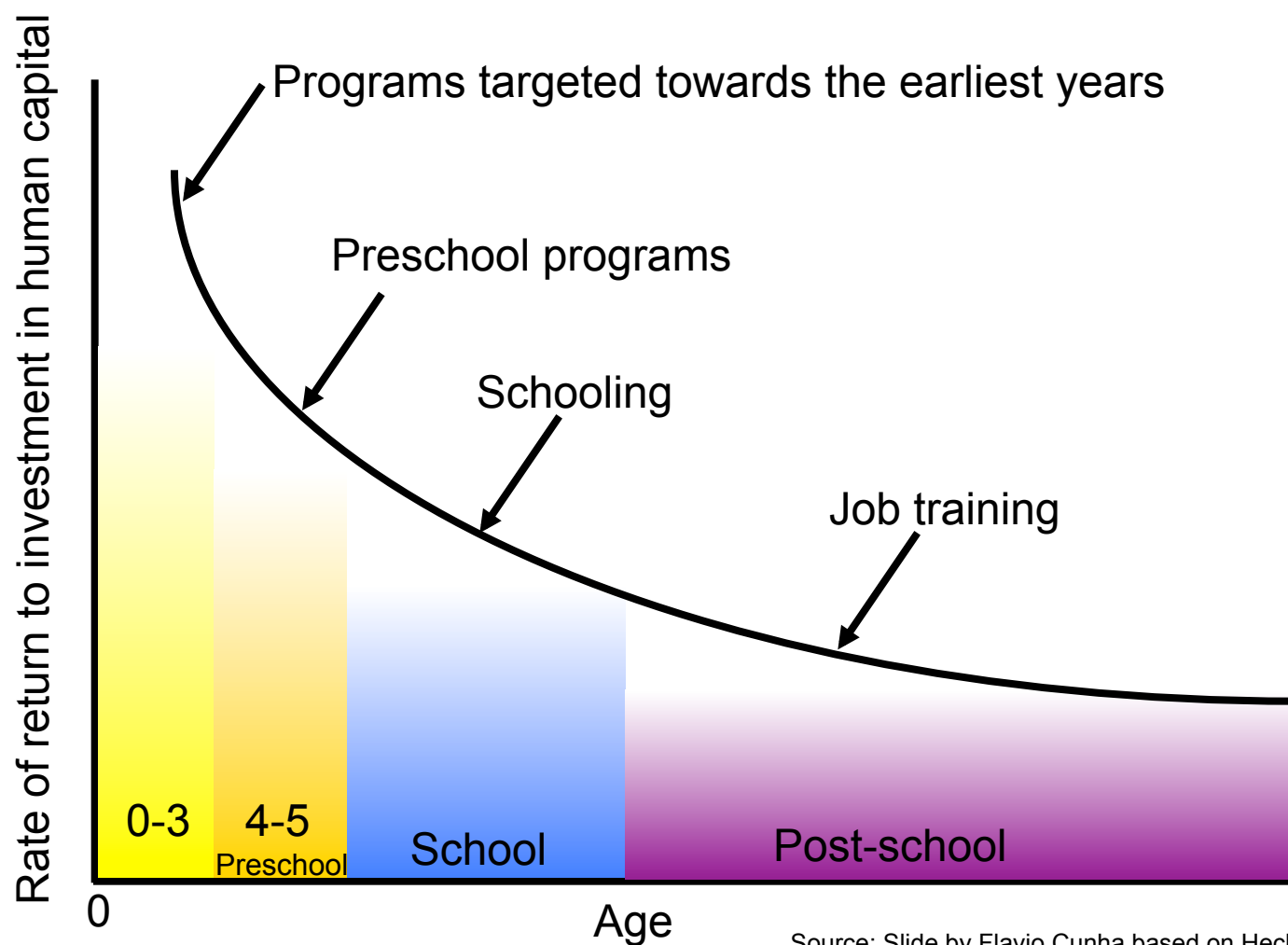
**supplemented**

**control**

UNICEF

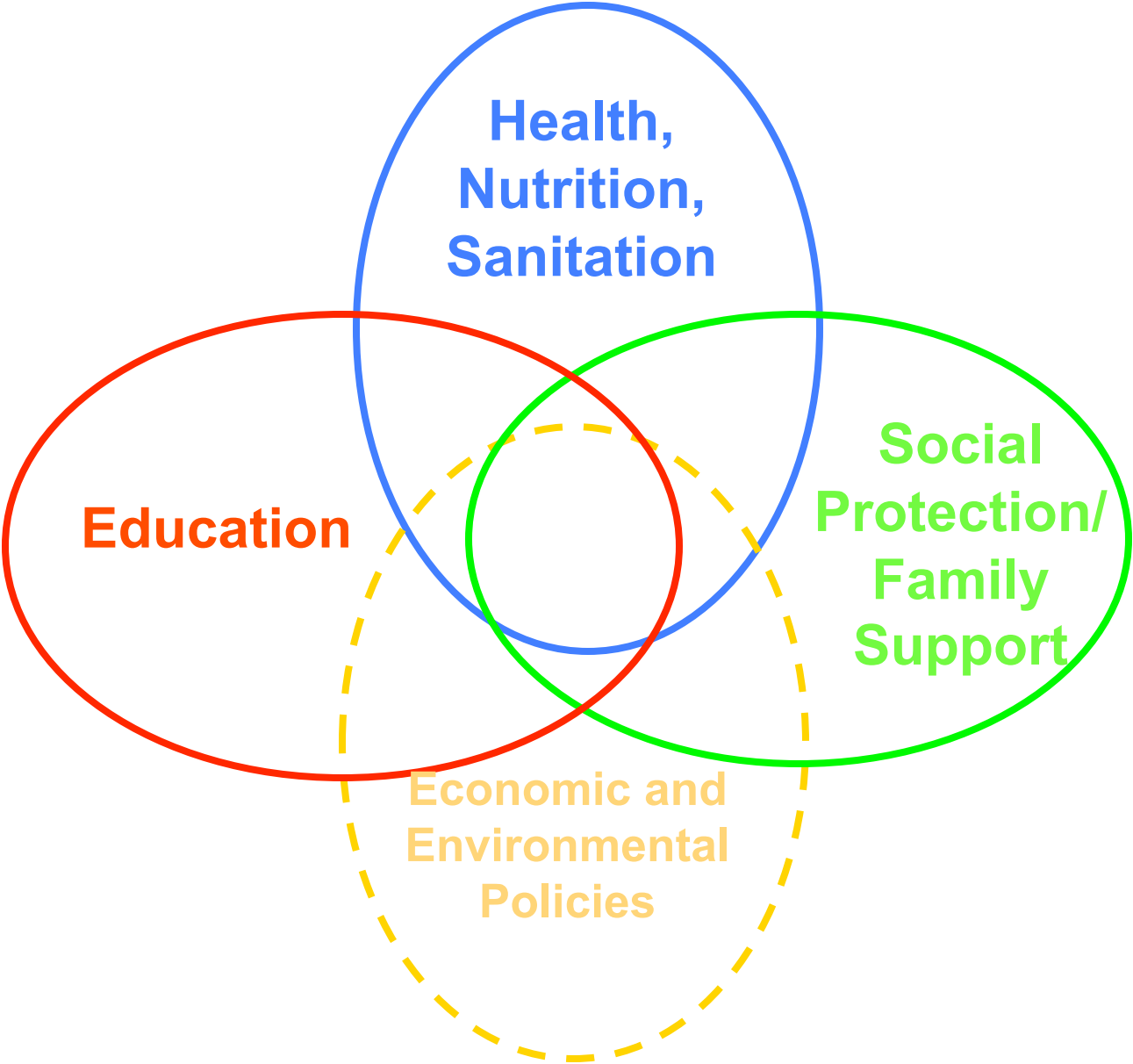
**Grantham-McGregor et al, 1991**

Figure: Rates of Return to Human Capital Investment at Different Ages: Return to an Extra Dollar at Various Ages

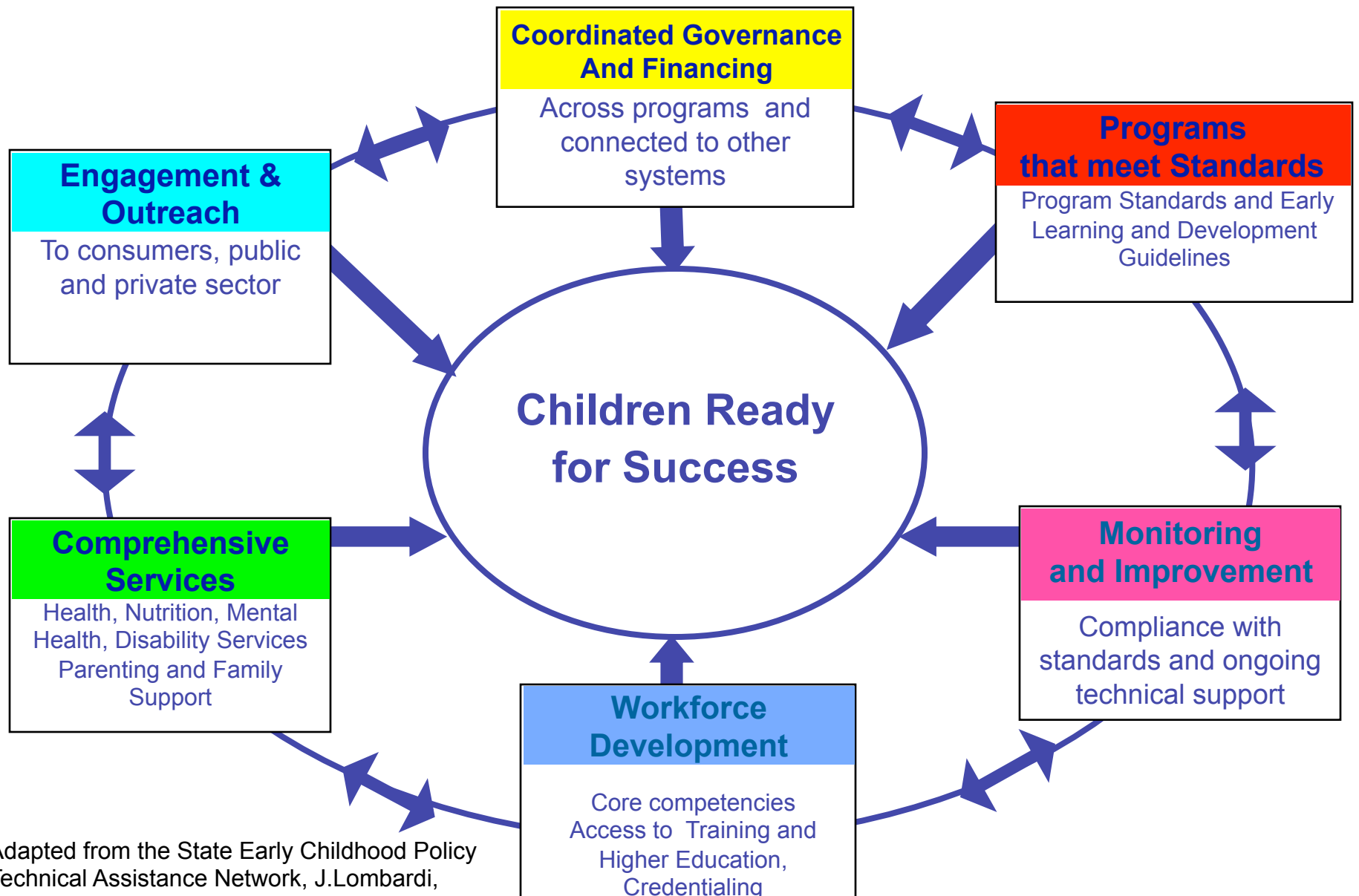


Source: Slide by Flavio Cunha based on Heckman and Masterov, 2004

# Policies Affecting Early Childhood Development

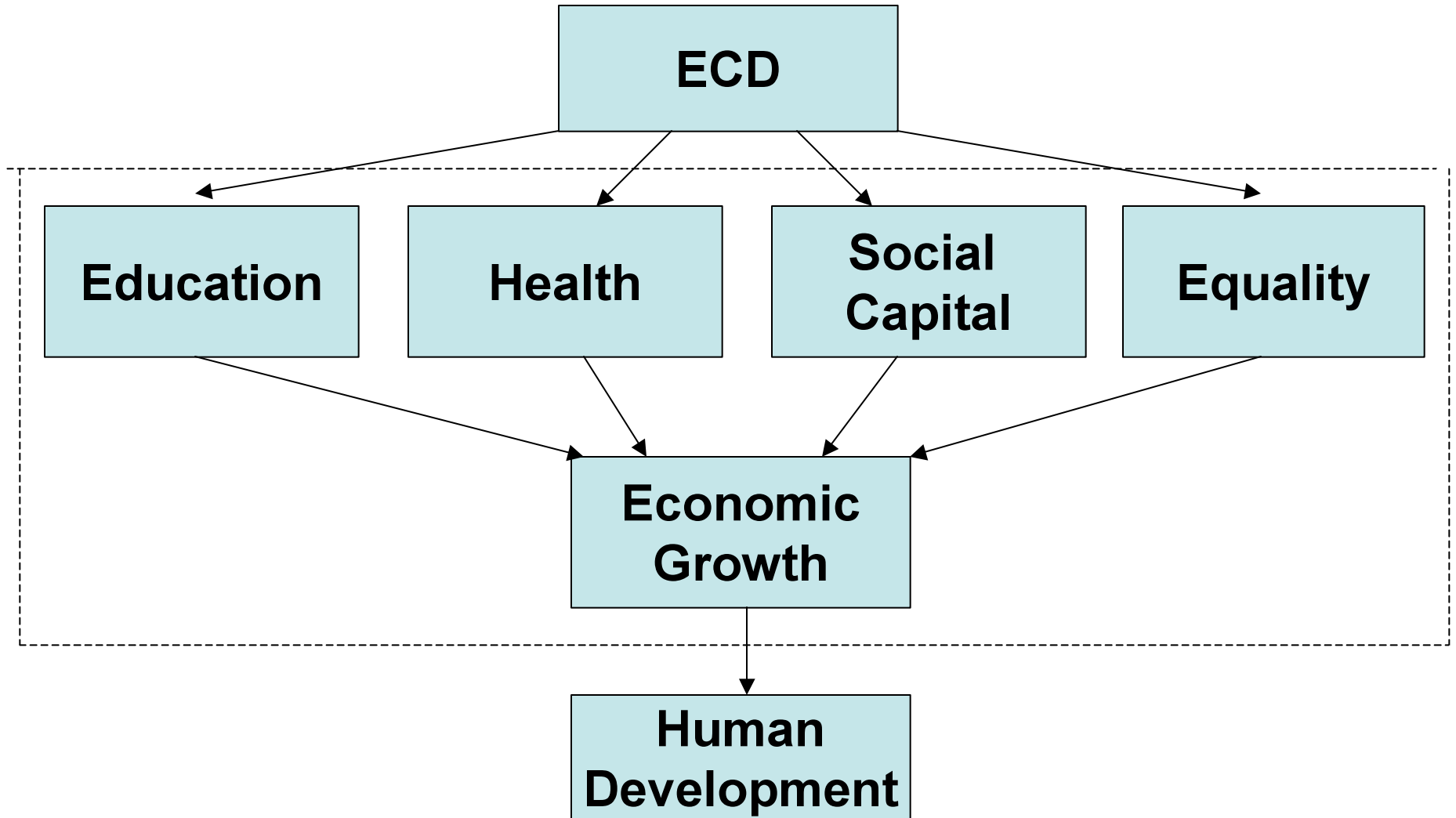


# Early Childhood Development System



Adapted from the State Early Childhood Policy Technical Assistance Network, J.Lombardi, 2007

# From Child Development to Human Development: A Comprehensive Framework



Source: Jacques van der Gaag "From Child Development to Human Development" in From Early Childhood Development to Human Development, Mary Eming Young, Ed. The World Bank, Washington, D.C.